

PLÁSTICS J.ALVAREZ L.T.D.

We offer our new generation of plastic molds for artificial stone



n1 (75x12)



n25 (70x12,5)

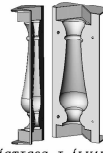


n13 (50x12)



n10 (45x8)

Best Price



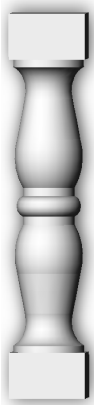
PLÁSTICOS J. ALVAREZ S. L.



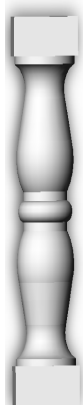
n7 (74x10)



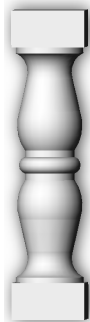
n2 (74x10)



n26 (71,5x12)



n8 (70x10)



n9 (45x12)



n10 (45x8)



n24 (65x12,5)

Filling percentages

- 15% White Cement (Resis. 525)
- 25% Water
- 20% Stone (thickness 2-3 mm)
- 40% fine sand

Major advantages

- Perfect finish in its products
 - Easy centric parts
 - Fast demoulding
 - Longer duration of their molds
 - Low cost production
 - We design custom
- CONSULT WITH NO OBLIGATION



n3 (75x12)



n4 (66x12)



n12 (50x10)



n11 (35x10)



n5 (69x10)

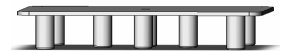


n6 (70x10)



n6 Bis (70x10)

Bases rod



n16 (73,5x12)



n17 (73,5x12)



n18 (73,5x13)



N19 (50X10)



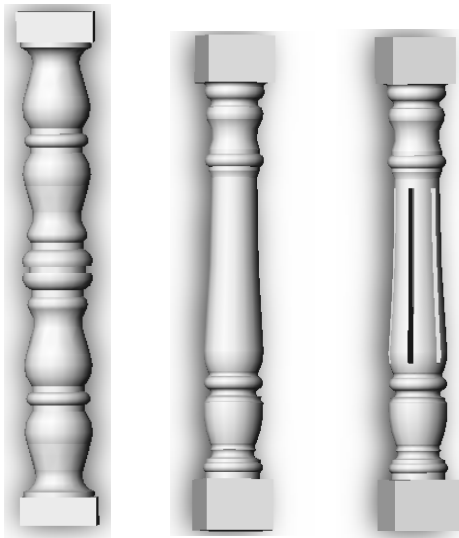
N20 (50X10)



N21 (50X10)



Clamps

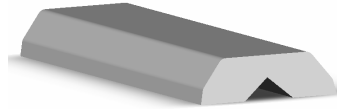


n14 (90X12) N22 (85X10) N23 (85X10)

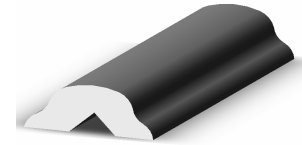
Features ABS plastic

Temperatures without damage 60 °to -80 °
 Data for the type of release agent used.
 Stable against alkalis, mild acids, fats and oils
 Unstable concentrated acids, chlorinated hydrocarbons,
 ketones, esters.

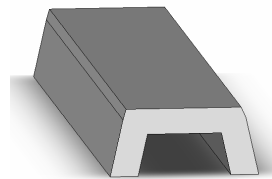
Bases and handrail



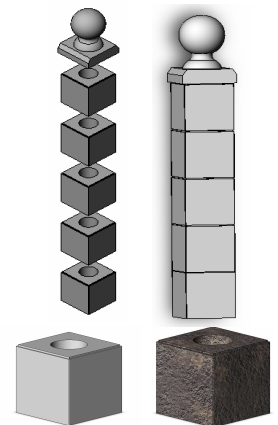
n29 Handrail liso (100x17)



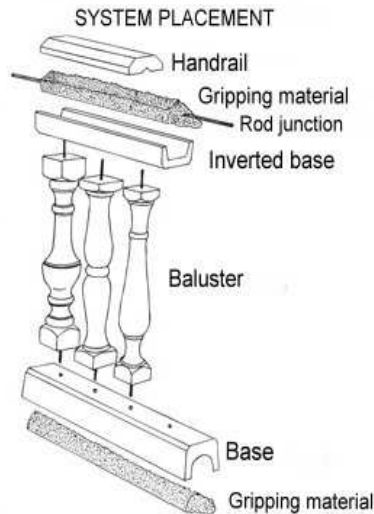
n15 Handrail curvo (100x17)



n31 Base lisa (100X16)

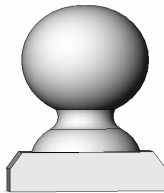


N35 Column
 N36 Column rustico
 (20x20x20)



Mounting Standards balusters fences.

It is necessary to make a general scheme and trace over the mounting surface.
 The maximum distance between pillars should not exceed 5m.
 Drill both low base and high base (inverted base) to exact measures. To fit the baluster on the base properly leveled.
 Mount the balusters on the base with the help of gripping material.
 We will present the top (inverted base) and fill on again with the bonding material.
 Finish placing the handrails.



n33 Ball lisa (22x22)

TODO RÚSTICO



n28 (73,5x12)



N27(50X10)



n30 Handrail (100x17)

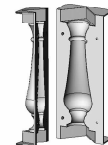


n34 Ball (22x22)



n32 Base (100x16)

Metal molds to handrails and bases



PLÁSTICOS J. ÁLVAREZ S. L.



FILLING
 Place the rod of 6mm to protrude baluster mold, 5cm above and below the base using rod base.
 Add the mixture and vibrating the mold gently tapping with a rubber mallet, to avoid pores.

