

BALUSTER MOLDS

We offer our new generation of plastic molds in 100% recyclable plastic for artificial stone



n1 (75x12)



n25 (70x12,5)



n13 (50x12)



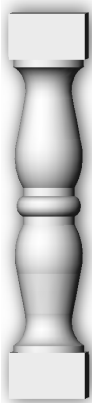
n37 (50x12)



n7 (74x10)



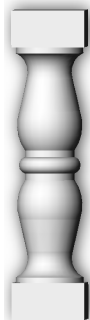
n2 (74x10)



n26 (71,5x12)



n8 (70x10)



n9 (45x12)



n10 (45x8)



n24 (65x12,5)

Filling percentages
 15% White Cement (Resis. 525)
 25% Water
 20% Stone (thickness 2-3 mm)
 40% fine sand

Major advantages
 Perfect finish in its products
 Easy centric parts
 Fast demoulding
 Longer duration of their molds
 Low cost production



n3 (75x12)



n4 (66x12)



n12 (50x10)



n11 (35x10)



n5 (69x10)

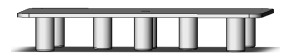


n6 (70x10)



n6 Bis (70x10)

Bases rod



n16 (73,5x12)



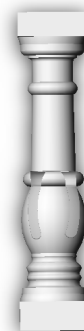
n17 (73,5x12)



n18 (73,5x13)



N19 (50X10)



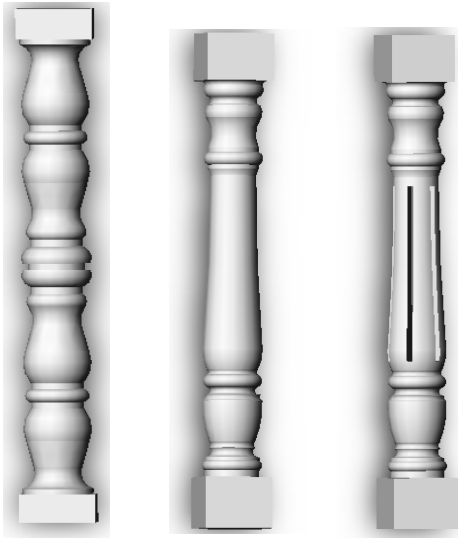
N20 (50X10)



N21 (50X10)



Clamps



n14 (90X12) N22 (85X10) N23 (85X10)

Mounting Standards balusters fences.

It is necessary to make a general scheme and trace over the mounting surface.
 The maximum distance recommended between pillars should not exceed 3 m. Drill both low base and high base (inverted base) to exact measures.
 Mount the balusters on the base properly leveled with the help of gripping material.
 Present the high base (inverted low base) and fill with the gripping material.
 Finish placing the handrails.

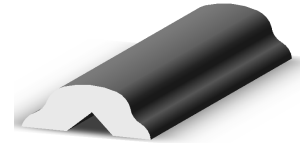
Features ABS plastic

Temperatures without damage 60 ° to -80 °
 Data for the type of release agent used.
 Stable against alkalis, mild acids, fats and oils
 Unstable concentrated acids, chlorinated hydrocarbons, ketones, esters.

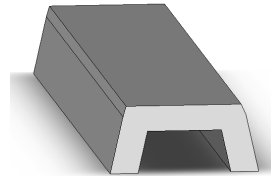
Bases and handrails



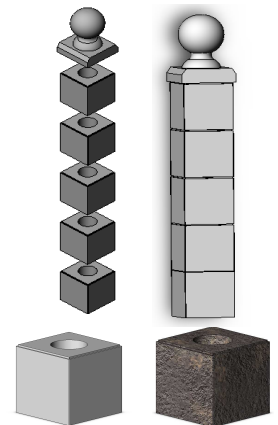
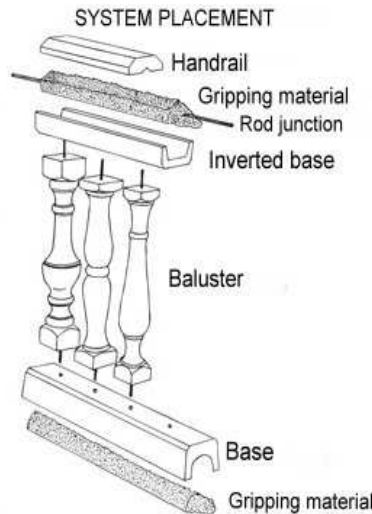
n29 Handrail (100x17)



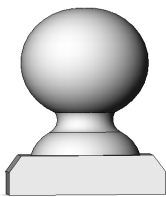
n15 Handrail (100x17)



n31 Base (100X16)



N35 Column
 N36 Column rustic
 (20x20x20)



n33 Ball (22x22)

ALL RUSTIC



n28 (73,5x12) N27(50X10)



n30 Handrail (100x17)

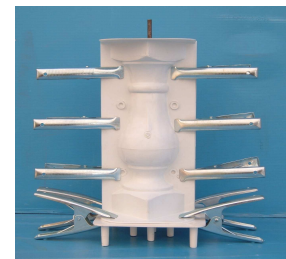


n34 Ball (22x22)



n32 Base (100x16)

Metal molds to handrails and bases



Filling: Spray mold release agent, join both sides of the molds on the rod support base, with the help of metal clamps. Place the 6 mm rod to protrude from the baluster mold both above and below 5 cm. Fill the mold with the indicated mixture. Once the mixture hardens, remove the clamps and the rod base. Finish unmolding our figure.

Whatsapp (+34) 65 66 52 707
 Tl. (+34) 958 43 65 76